



NanoMech's **GUARDx™** is the next generation of superior performance anti-corrosion paints, coatings and rust inhibitors that remarkably enhance the functional life of a vast array of industrial components and metal surfaces operating under the most extreme conditions. **GUARDx™** coating products have been manufactured with cutting-edge chemistries to yield exceptional resistance to corrosion, wear, abrasion, thermal excursion, cyclic thermal stress, friction and environmental degradation. In use by the world's largest truck lines, OEMs and manufacturers.

**Industrial Paints**  
**Corrosion Resistant Coatings**  
**Rust Inhibitors**  
**Metallic-Ceramic Overlays**  
**Multifunctional Corrosion Protectant**



World Headquarters  
2447 Technology Way  
Springdale, AR 72764  
(479) 725-8009  
info@nanomech.com  
www.NanoMech.com



# GUARDX



Without GUARDx™



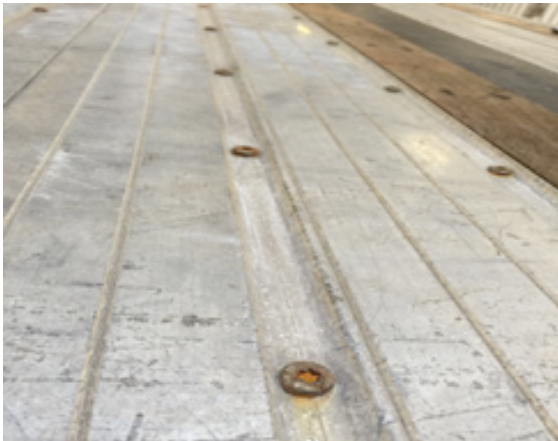
With GUARDx™



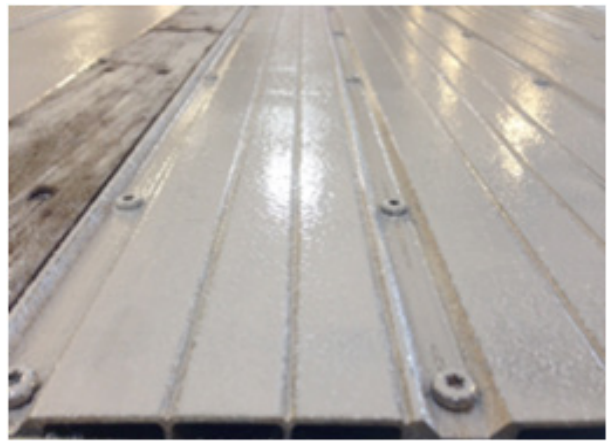
Without GUARDx™



With GUARDx™



Without GUARDx™



With GUARDx™

GUARDx™ is the most advanced corrosion inhibitor and surface protectant that enhances the functional life of multiple trucking components including the undercarriage, truck beds, wheels and all essential parts of the tractor-trailer operating in the most extreme conditions. These multifunctional coatings provide many benefits including the best wear, water, and corrosion resistance, UV, and operating temperature ranges.



NanoMech Industries

Dallas

Houston

Palo Alto

Springdale